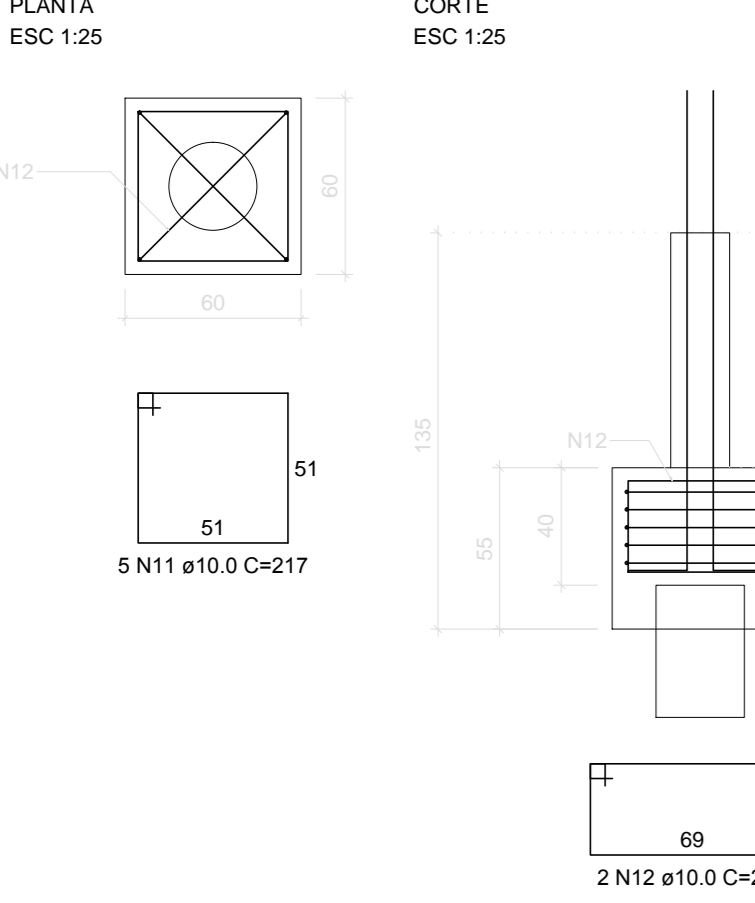
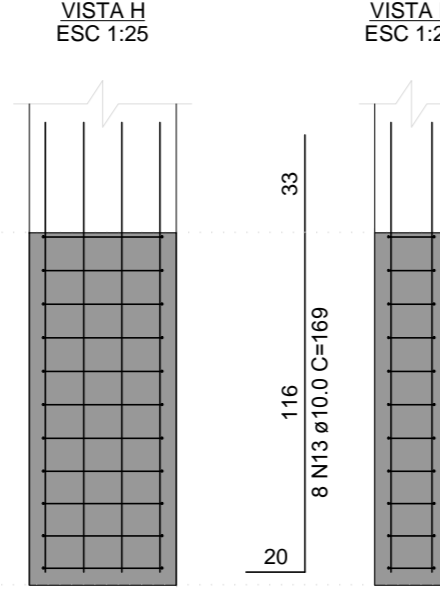
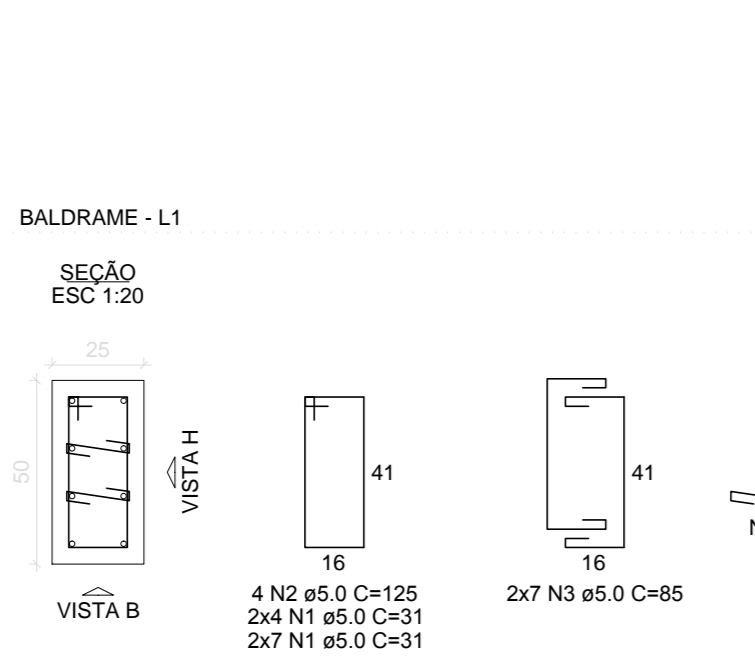


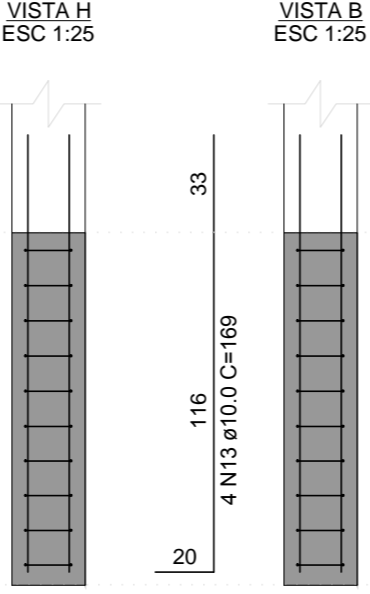
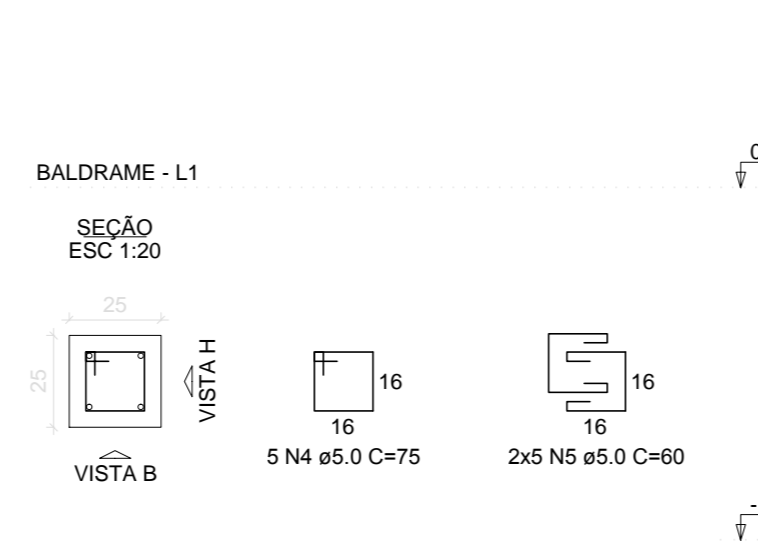
B21=B22=B23=B24=B25=B26=B27=B28=B29=B31
=B32=B33=B35=B36=B37=B41=B42=B46=B47
=B48
1xHC30



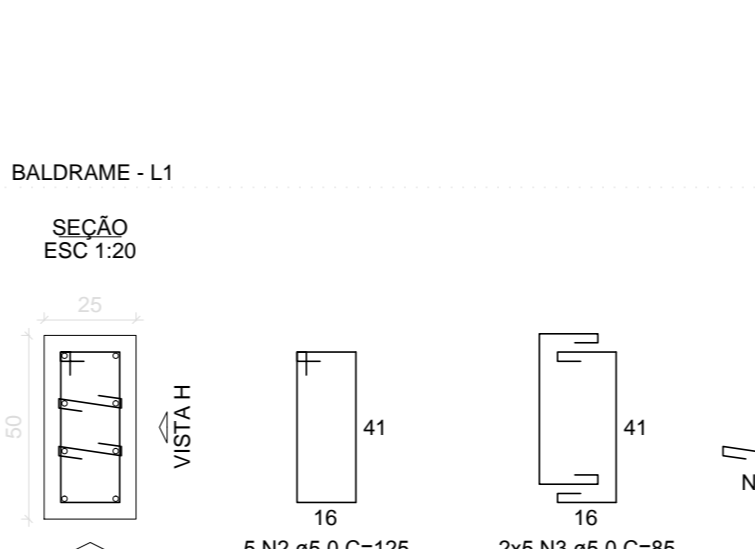
P21=P22=P23=P24=P25=P26=P27=P28=P29=P32



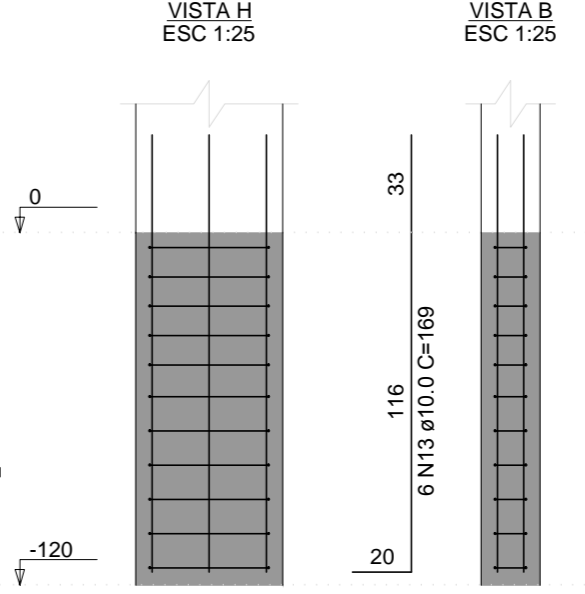
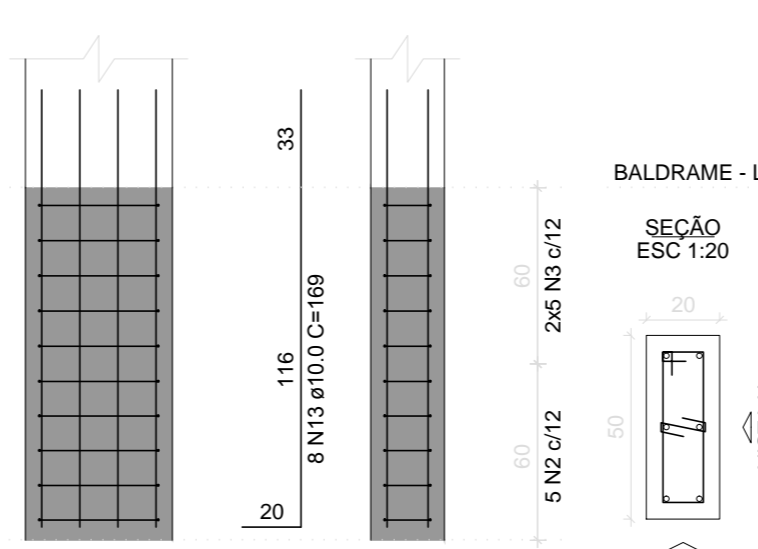
P31



P33=P48



P36=P42



RELAÇÃO DO AÇO

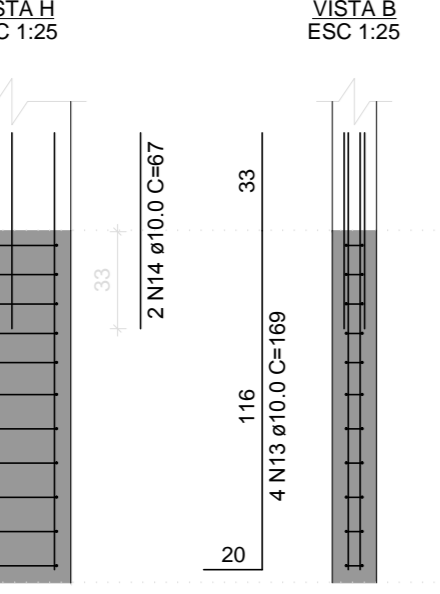
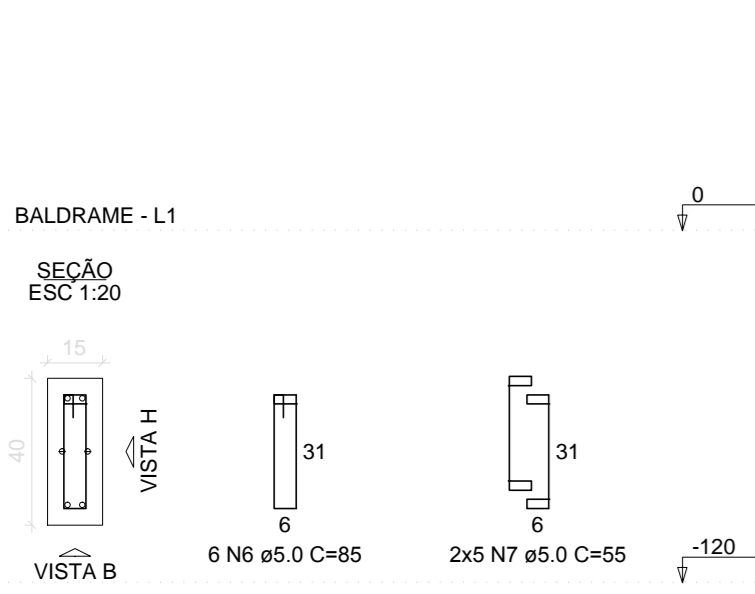
ACO	N	DIAM (mm)	QUANT	C UNIT (mm)	C TOTAL (mm)
CABO	1	5.0	288	31	8928
CABO	2	5.0	180	120	21600
CABO	3	5.0	180	120	21600
CABO	4	5.0	180	120	21600
CABO	5	5.0	180	120	21600
CABO	6	5.0	180	120	21600
CABO	7	5.0	180	120	21600
CABO	8	5.0	180	120	21600
CABO	9	5.0	180	120	21600
CABO	10	5.0	180	120	21600
CABO	11	5.0	180	120	21600
CABO	12	5.0	180	120	21600
CABO	13	5.0	180	120	21600
CABO	14	5.0	180	120	21600
CABO	15	5.0	180	120	21600
CABO	16	5.0	180	120	21600

RESUMO DO AÇO

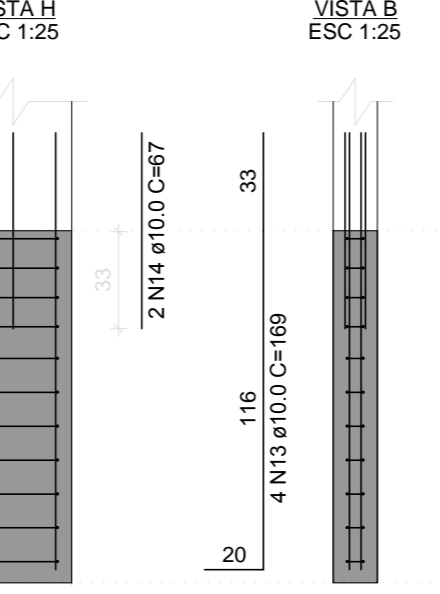
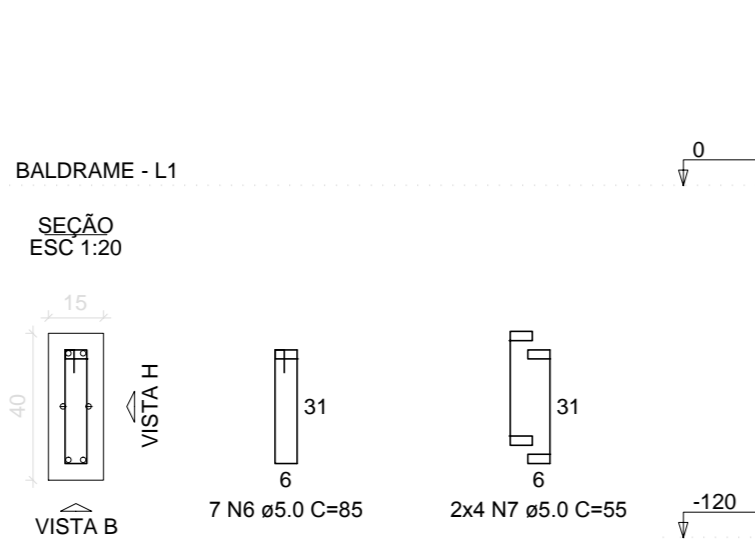
ACO	DIAM (mm)	C TOTAL (mm)	PESO (kg)
CABO	5.0	328.2	328.8
CABO	5.0	375.3	375.8
PESO TOTAL (kg)			704.6
CABO			328.8
CABO			375.8

Volume de concreto (C-30) = 8.20 m³
Área da forma = 58.74 m²

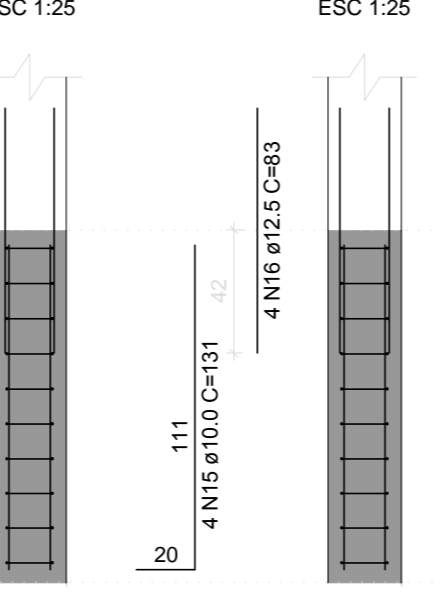
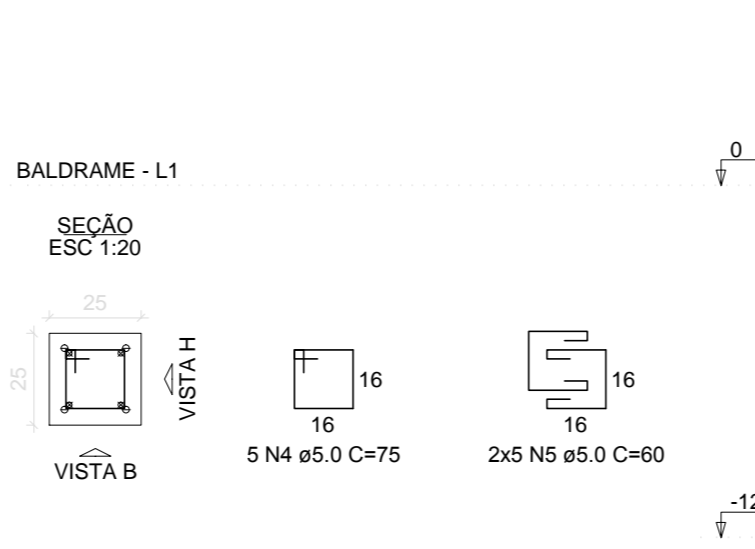
P35=P37-P41



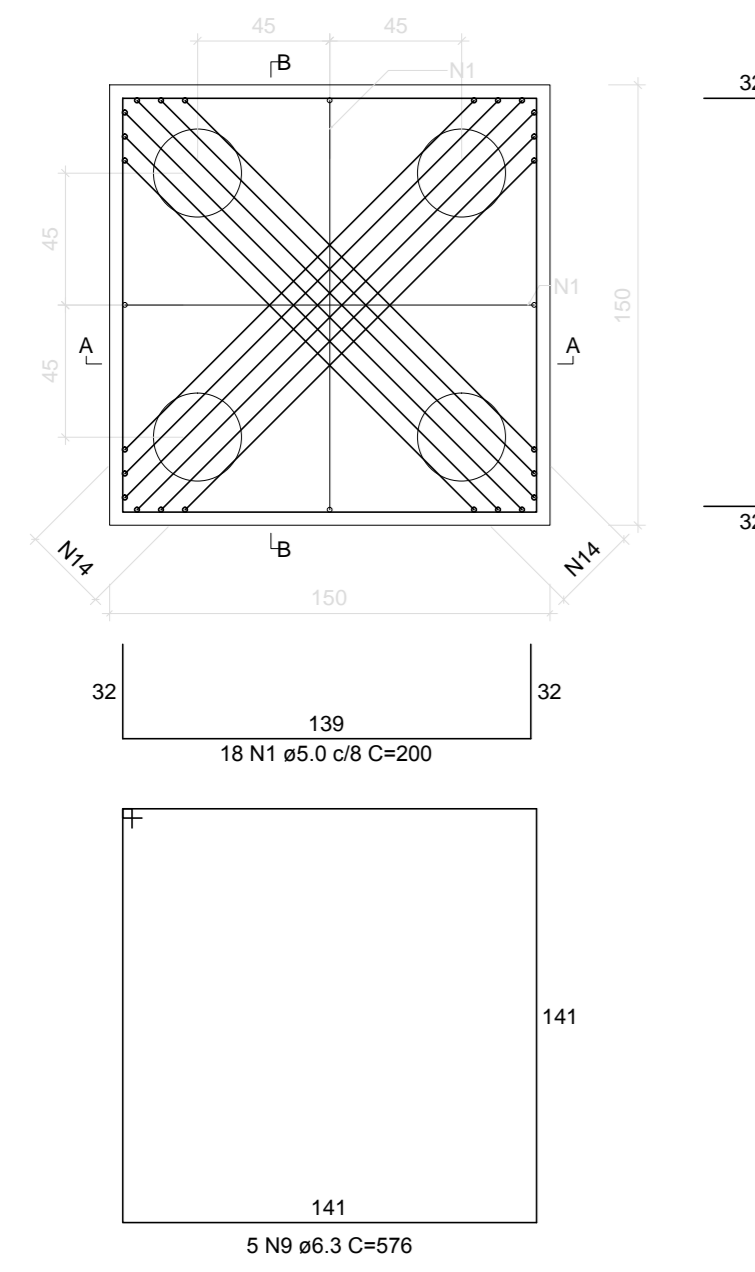
P46



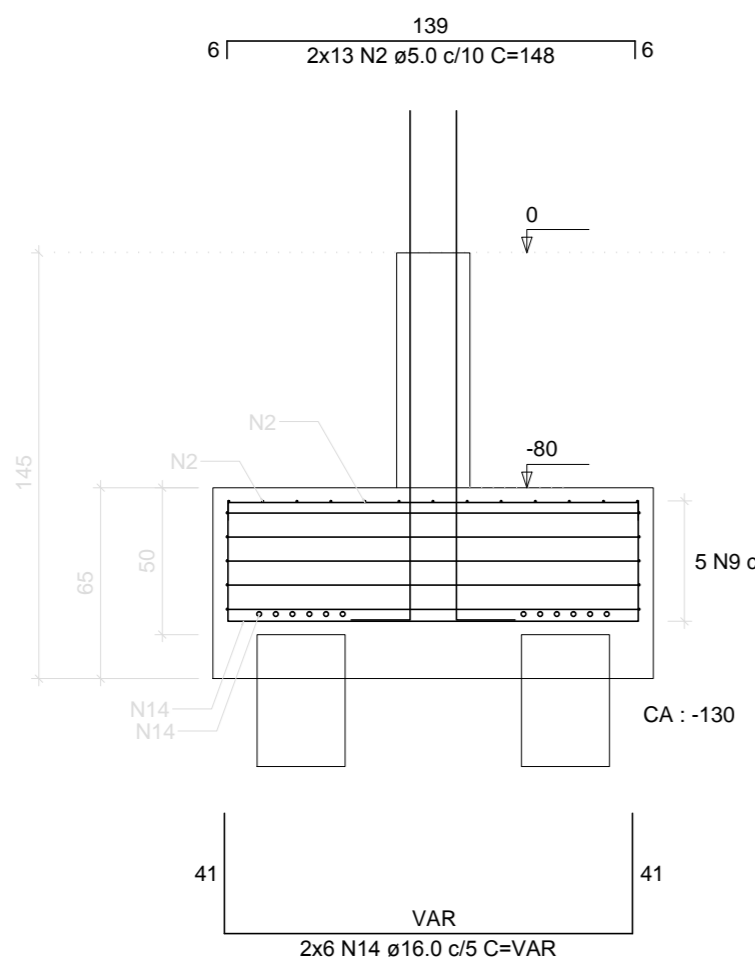
P47



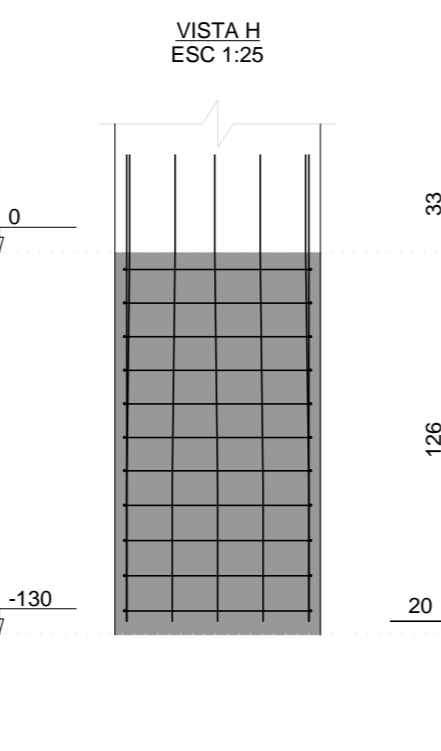
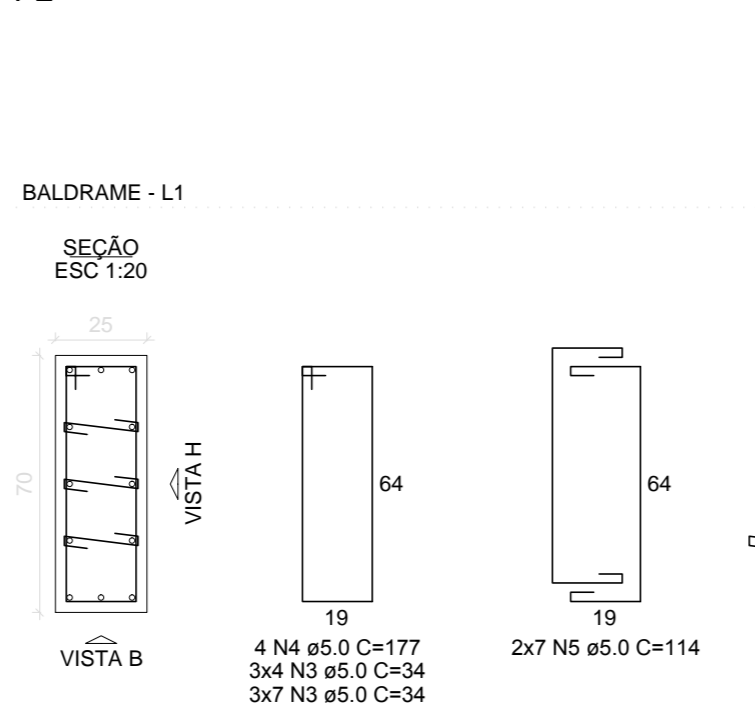
B2=B3=B4=B5=B6=B7=B8=B9
4xHC30



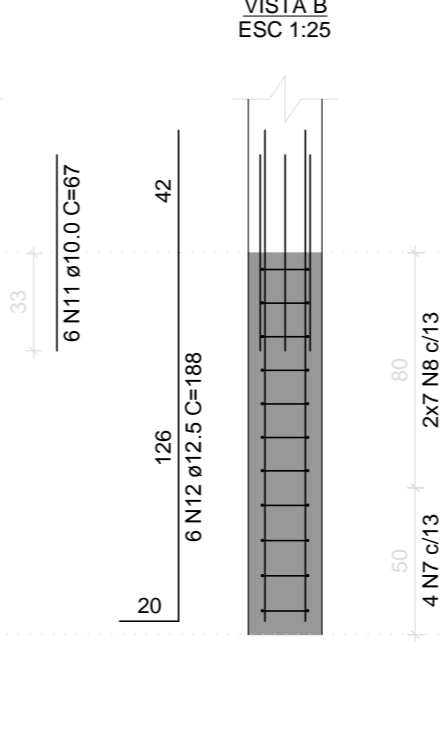
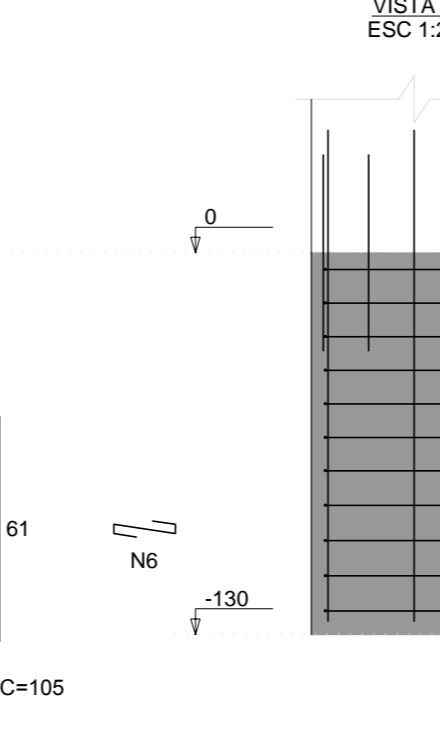
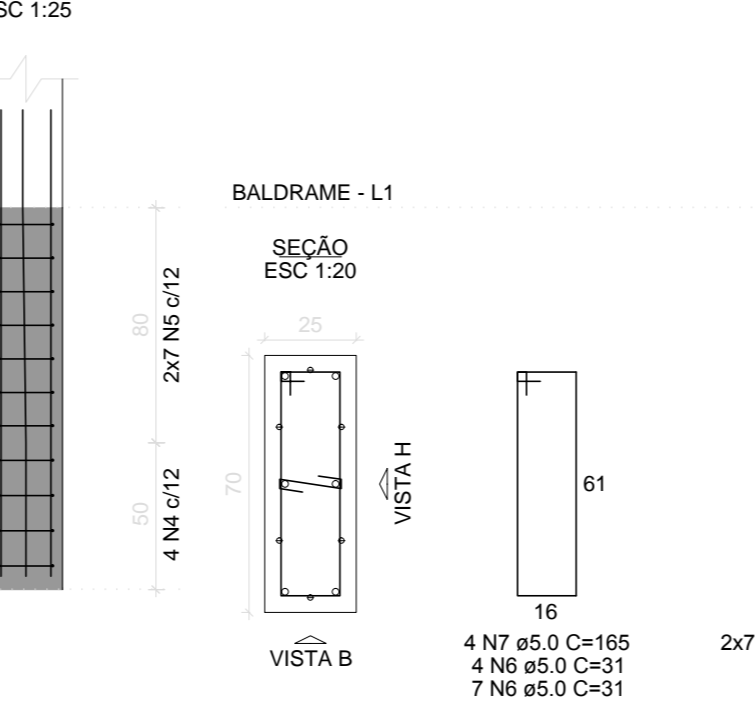
CORTE A-A - CORTE B-B
ESC 1:25



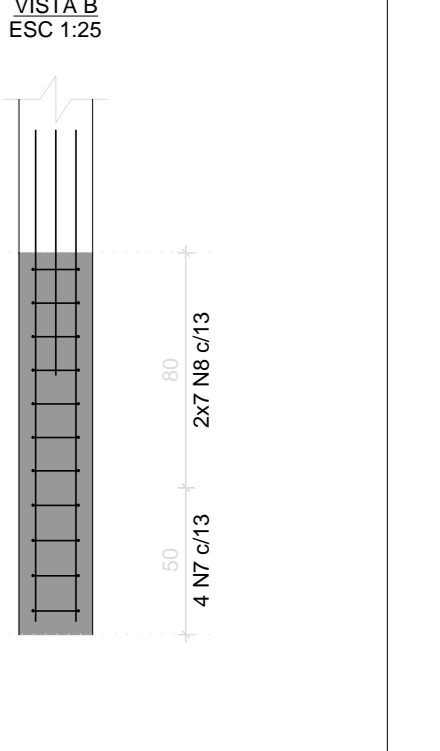
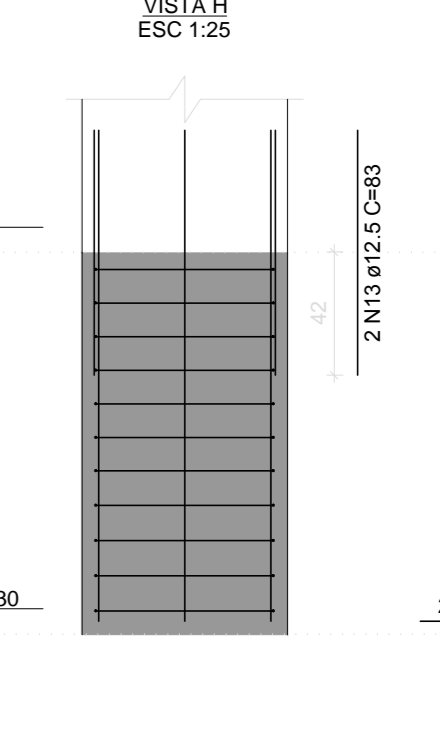
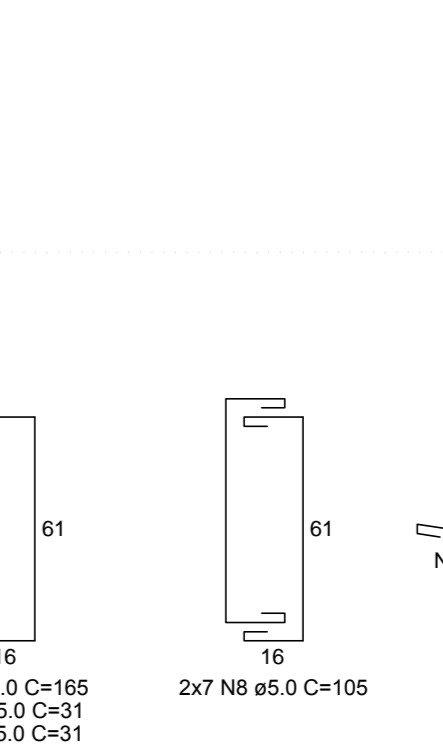
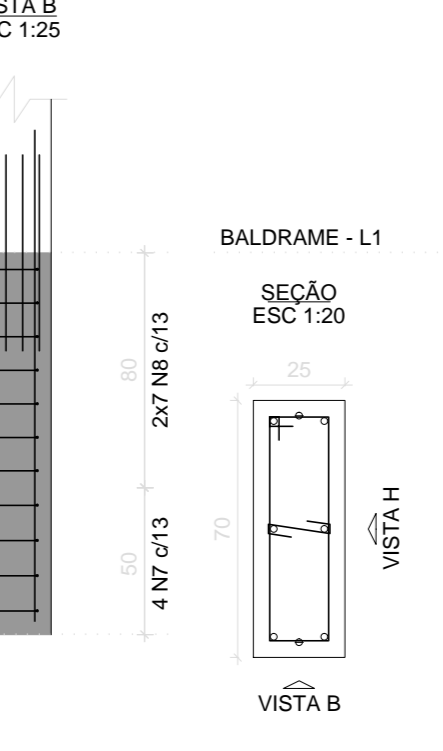
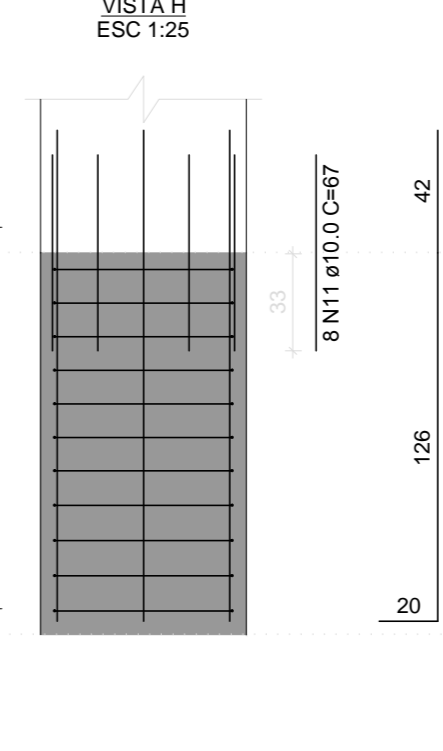
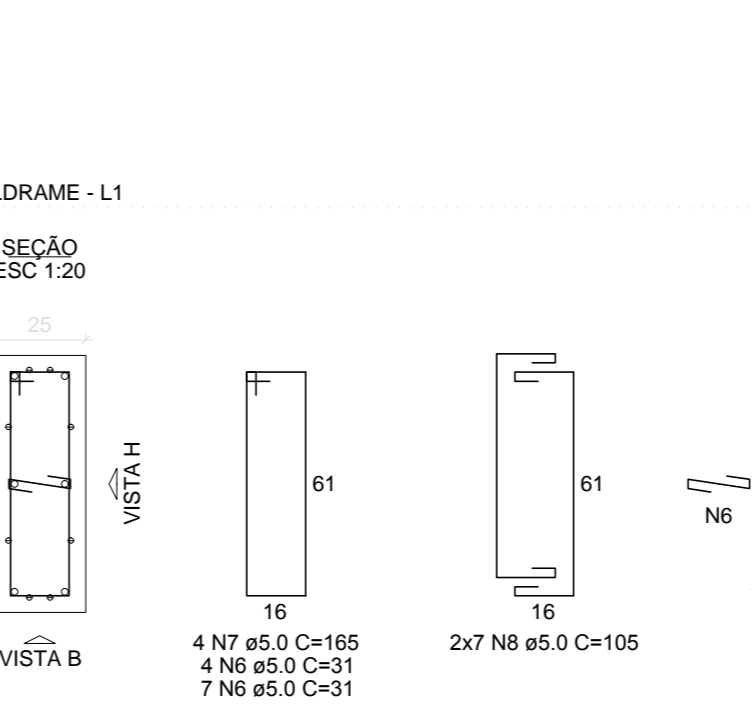
P2



P3



P7



RELAÇÃO DO AÇO

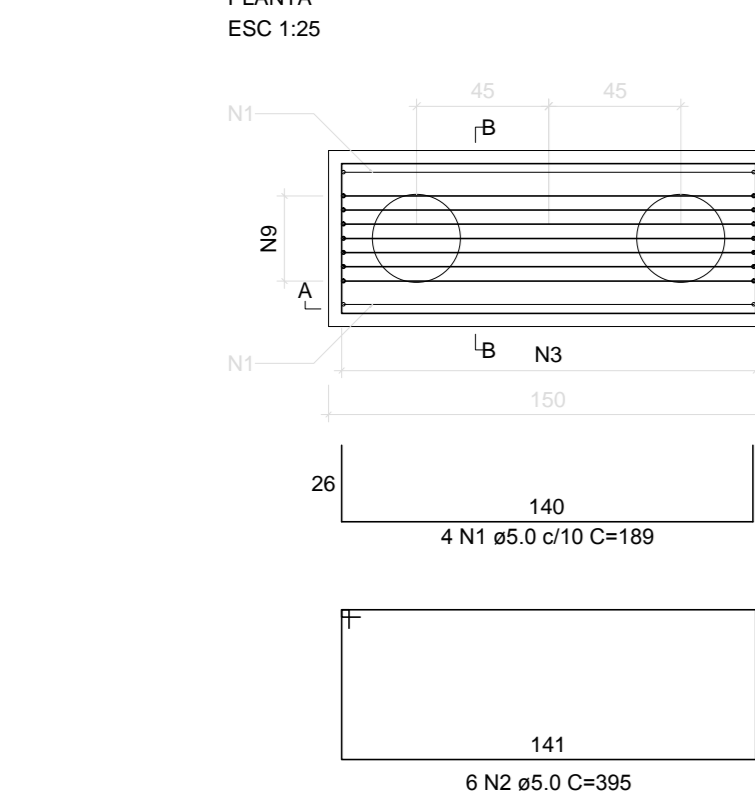
ACO	N	DIAM (mm)	QUANT	C UNIT (mm)	C TOTAL (mm)
CABO	1	5.0	288	31	8928
CABO	2	5.0	180	120	21600
CABO	3	5.0	180	120	21600
CABO	4	5.0	180	120	21600
CABO	5	5.0	180	120	21600
CABO	6	5.0	180	120	21600
CABO	7	5.0	180	120	21600
CABO	8	5.0	180	120	21600
CABO	9	5.0	180	120	21600
CABO	10	5.0	180	120	21600
CABO	11	5.0	180	120	21600
CABO	12	5.0	180	120	21600
CABO	13	5.0	180	120	21600
CABO	14	5.0	180	120	21600
CABO	15	5.0	180	120	21600
CABO	16	5.0	180	120	21600

RESUMO DO AÇO

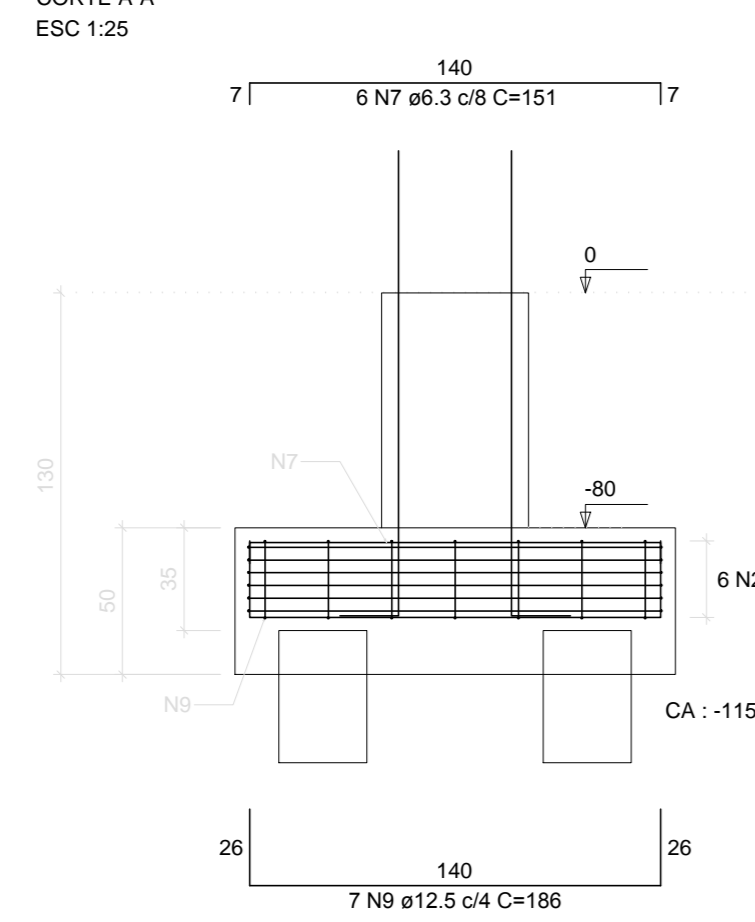
ACO	DIAM (mm)	C TOTAL (mm)	PESO (kg)
CABO	5.0	328.2	328.8
CABO	5.0	375.3	375.8
PESO TOTAL (kg)			704.6
CABO			328.8
CABO			375.8

Volume de concreto (C-30) = 14.16 m³
Área da forma = 61.60 m²

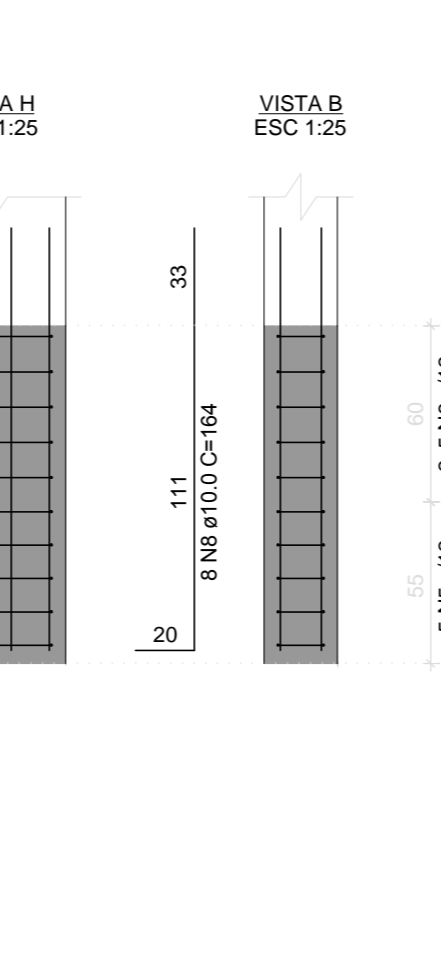
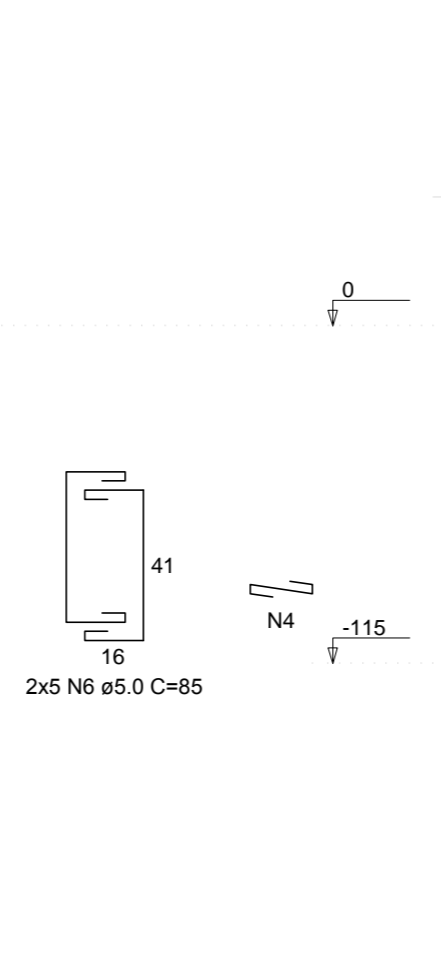
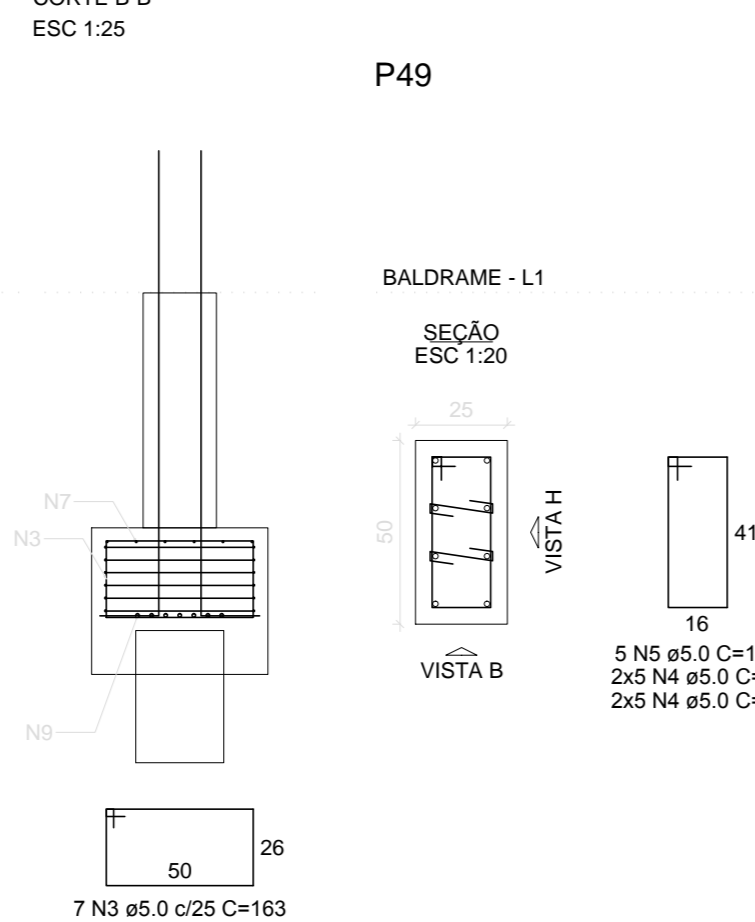
B49
2xHC30



CORTE A-A
ESC 1:25



CORTE B-B
ESC 1:25



RELAÇÃO DO AÇO

ACO	N	DIAM (mm)	QUANT	C UNIT (mm)	C TOTAL (mm)
CABO	1	5.0	4	189	756
CABO	2	5.0	4	189	756
CABO	3	5.0	4	189	756
CABO	4	5.0	4	189	756
CABO	5	5.0	4	189	756
CABO	6	5.0	4	189	756
CABO	7	5.0	4	189	756
CABO	8	5.0	4	189	756
CABO	9	5.0	4	189	756
CABO	10	5.0	4	189	756
CABO	11	5.0	4	189	756
CABO	12	5.0	4	189	756
CABO	13	5.0	4	189	756
CABO	14	5.0	4	189	756
CABO	15	5.0	4	189	756
CABO	16	5.0	4	189	756

RESUMO DO AÇO

ACO	DIAM (mm)	C TOTAL (mm)	PESO + 10% (kg)
CABO	5.0	8.1	2.3
CABO	10.0	13.2	8.2
CABO	12.5	12	12.4
CABO	5.0	63.6	9.8
PESO TOTAL (kg)			23.1
CABO			23.1

Volume de concreto (C-30) = 0.86 m³
Área da forma = 4.93 m²

Notas:
01 NBR6118:2014 - Classe de Agressividade Ambiental = II (estrutura revestida).
02 NBR6118:2014 - Concreto com fck=30MPa - Água CA=50.
03 NBR6118:2014 - Cobrimentos fixados nas respectivas plantas de armações.
04 Unidades: diâmetro do aço em milímetros; espaçamento e comprimento em centímetros; níveis em metro.



Avenida Atlântica, 80 - Itapluã - Imbituba/SC - fone: (48)3255-3163

OBRA: PRÉDIO MEDICINA - C. TEÓFILO OTONI	PROPRIETÁRIO: UFVJM - MG
AUTOR: MAICON M. MORAIS-CREA/SC 129409-0	ESCALA: INDICADA
RESP. TÉCNICO: Eng. Maicon M. Moraes -CREA/SC 129409-0	PRANCHA: 09/41
CONTEÚDO: Armação blocos e arranques.	DATA: Setembro/2018
	ÁREA: 1551,00 m²